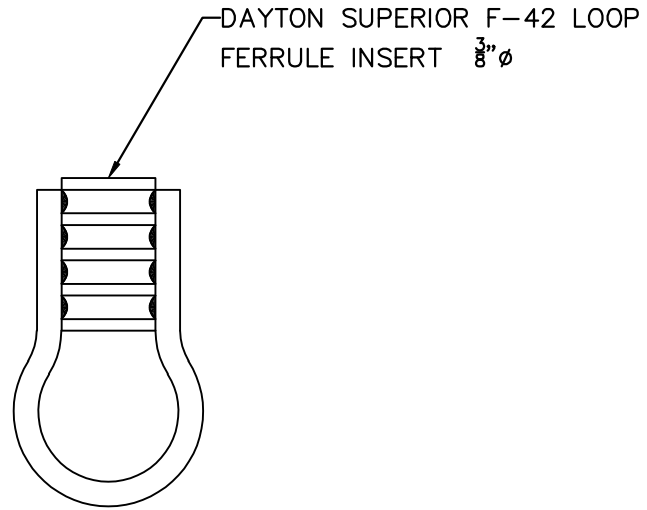



PLOTDATE: 10/05/07 07:39:40 KGAERDITZ FILENAME: O:\JOBS\07027 (NEW MEADOWLANDS STADIUM)\ACAD\PARTS\PRECAST\07348-P5008HG

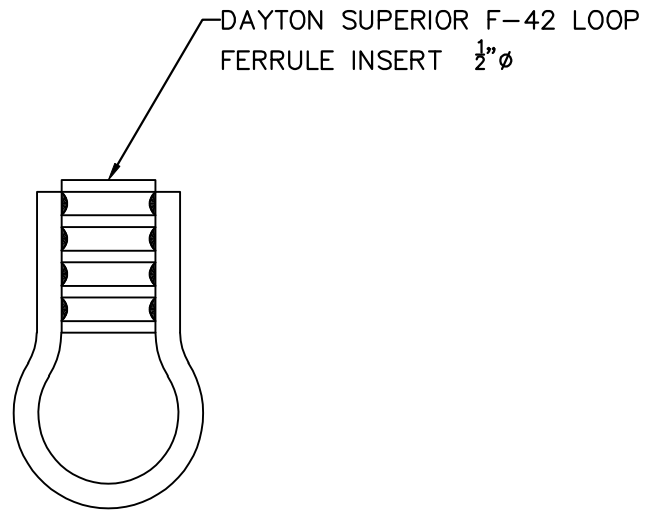


JOB USE

DATE: 11/17/08
CONSULTING ENGINEERS GROUP, INC.


				FINISH NOTES: MATERIAL AND WELDING NOTES: SEE HIGH CONCRETE GROUP'S STANDARDS PACKAGE FOR ASTM AND AWS REQUIREMENTS.	DRAFTER: BDL	 HIGH CONCRETE GROUP	WEIGHT:	
					CHECKER: WK		PROJECT: NOTRE DAME	
NO.	REVISION	BY	DATE	ENGINEER:	JOB NO.: 08- SHEET NO.: 4518EP			

PLOTDATE: 10/05/07 07:39:40 KGAERDITZ FILENAME: O:\JOBS\07027 (NEW MEADOWLANDS STADIUM)\ACAD\PARTS\PRECAST\07348-P5008HG

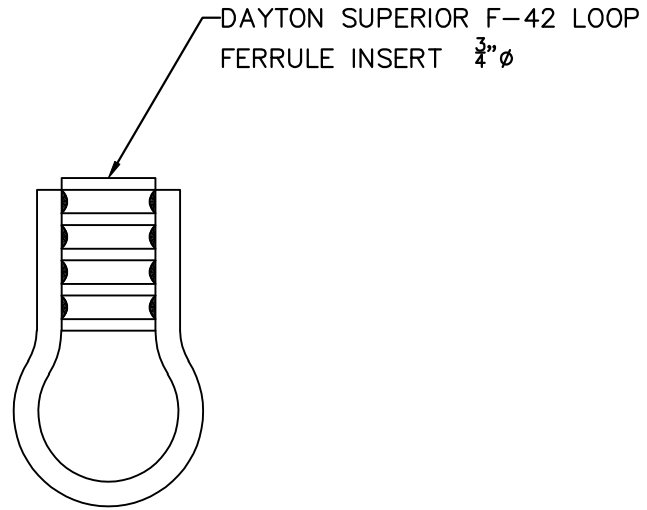


JOB USE

DATE: 11/17/08
CONSULTING ENGINEERS GROUP, INC.


				FINISH NOTES: MATERIAL AND WELDING NOTES: SEE HIGH CONCRETE GROUP'S STANDARDS PACKAGE FOR ASTM AND AWS REQUIREMENTS.	DRAFTER: BDL	 HIGH CONCRETE GROUP	WEIGHT:	
					CHECKER: WK		PROJECT:	NOTRE DAME
NO.	REVISION	BY	DATE	ENGINEER:	JOB NO.:		08-	SHEET NO.:

PLOTDATE: 10/05/07 07:39:40 KGAERDITZ FILENAME: O:\JOBS\07027 (NEW MEADOWLANDS STADIUM)\ACAD\PARTS\PRECAST\07348-P5008HG

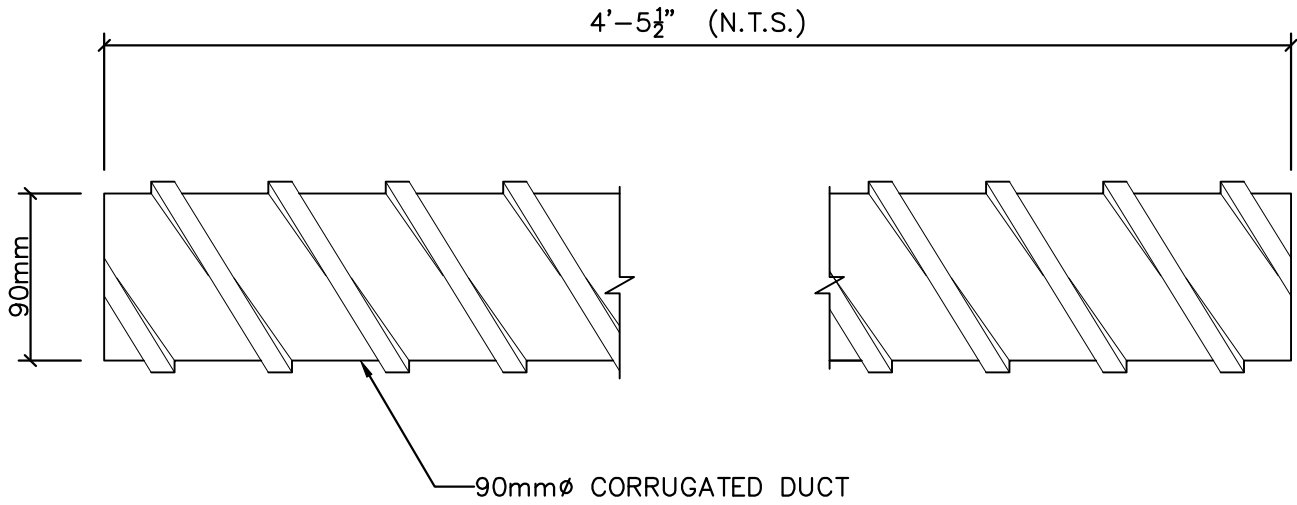


JOB USE

DATE: 11/17/08
CONSULTING ENGINEERS GROUP, INC.


				FINISH NOTES: MATERIAL AND WELDING NOTES: SEE HIGH CONCRETE GROUP'S STANDARDS PACKAGE FOR ASTM AND AWS REQUIREMENTS.	DRAFTER: BDL	 HIGH CONCRETE GROUP	WEIGHT:	
					CHECKER: WK		PROJECT: NOTRE DAME	
NO.	REVISION	BY	DATE	ENGINEER:	JOB NO.: 08- SHEET NO.: 4520EP			

PLOTDATE: 10/05/07 07:39:40 KGAERDITZ FILENAME: O:\JOBS\07027 (NEW MEADOWLANDS STADIUM)\ACAD\PARTS\PRECAST\07348-P5008HG

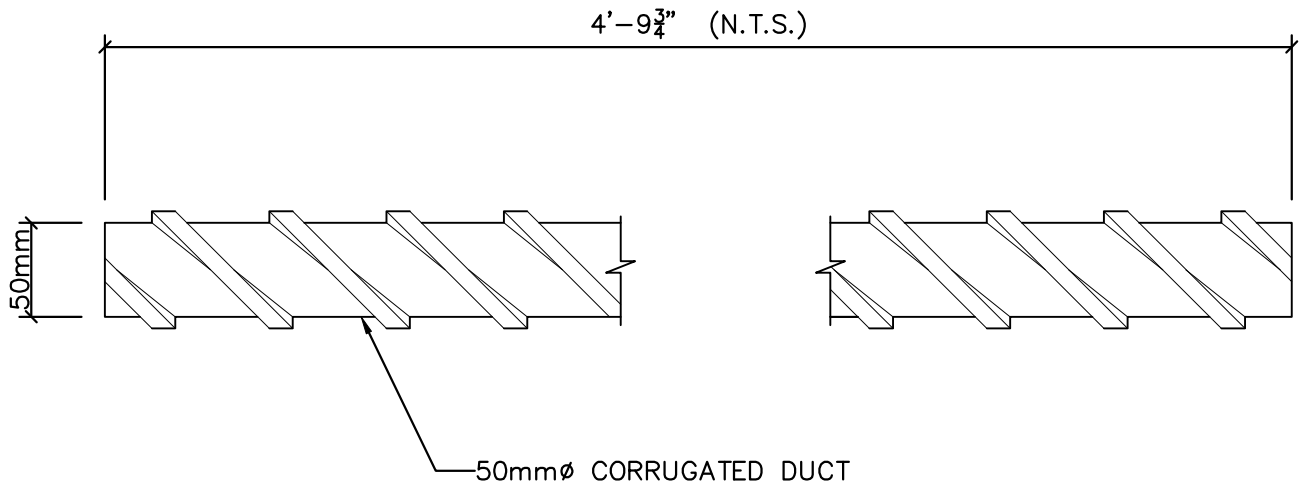


JOB USE

DATE: 11/17/08
 CONSULTING ENGINEERS GROUP, INC.


				FINISH NOTES: MATERIAL AND WELDING NOTES: SEE HIGH CONCRETE GROUP'S STANDARDS PACKAGE FOR ASTM AND AWS REQUIREMENTS.	DRAFTER: BDL	 HIGH CONCRETE GROUP	WEIGHT:	
					CHECKER: WK		PROJECT:	NOTRE DAME
NO.	REVISION	BY	DATE		ENGINEER:		JOB NO.:	08-
						SHEET NO.:	5000UC	

PLOTDATE: 10/05/07 07:39:40 KGAERDITZ FILENAME: O:\JOBS\07027 (NEW MEADOWLANDS STADIUM)\ACAD\PARTS\PRECAST\07348-P5008HG

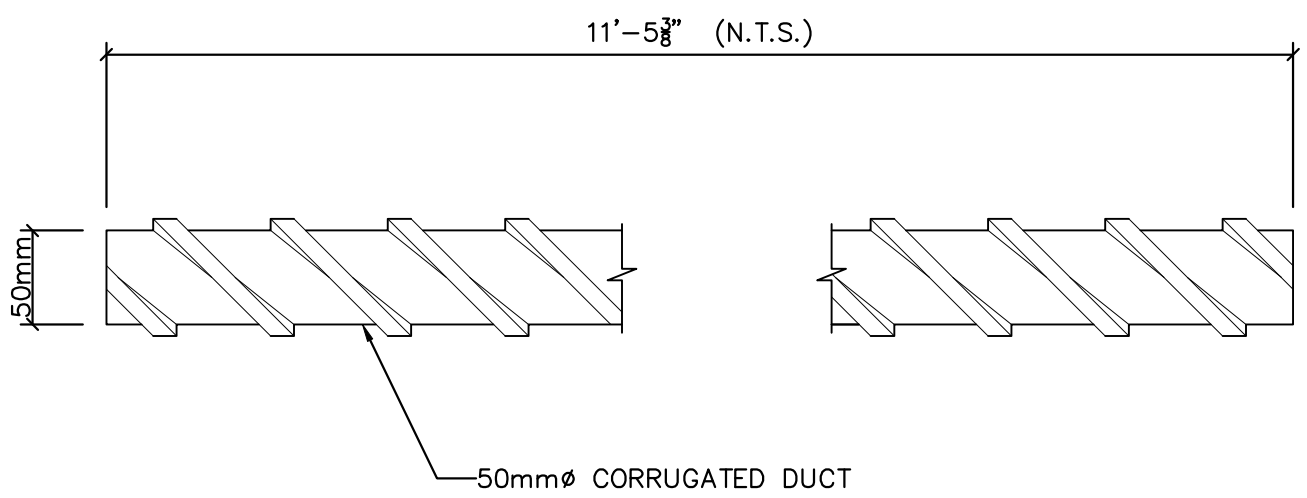


JOB USE

DATE: 11/17/08
 CONSULTING ENGINEERS GROUP, INC.


				<u>FINISH NOTES:</u>		WEIGHT:	
				<u>MATERIAL AND WELDING NOTES:</u> SEE HIGH CONCRETE GROUP'S STANDARDS PACKAGE FOR ASTM AND AWS REQUIREMENTS.	DRAFTER: BDL	 HIGH CONCRETE GROUP	PROJECT: NOTRE DAME
					CHECKER: WK		JOB NO.: 08-
NO.	REVISION	BY	DATE		ENGINEER:		SHEET NO.: 5001UC

PLOTDATE: 10/05/07 07:39:40 KGAERDITZ FILENAME: O:\JOBS\07027 (NEW MEADOWLANDS STADIUM)\ACAD\PARTS\PRECAST\07348-P5008HG

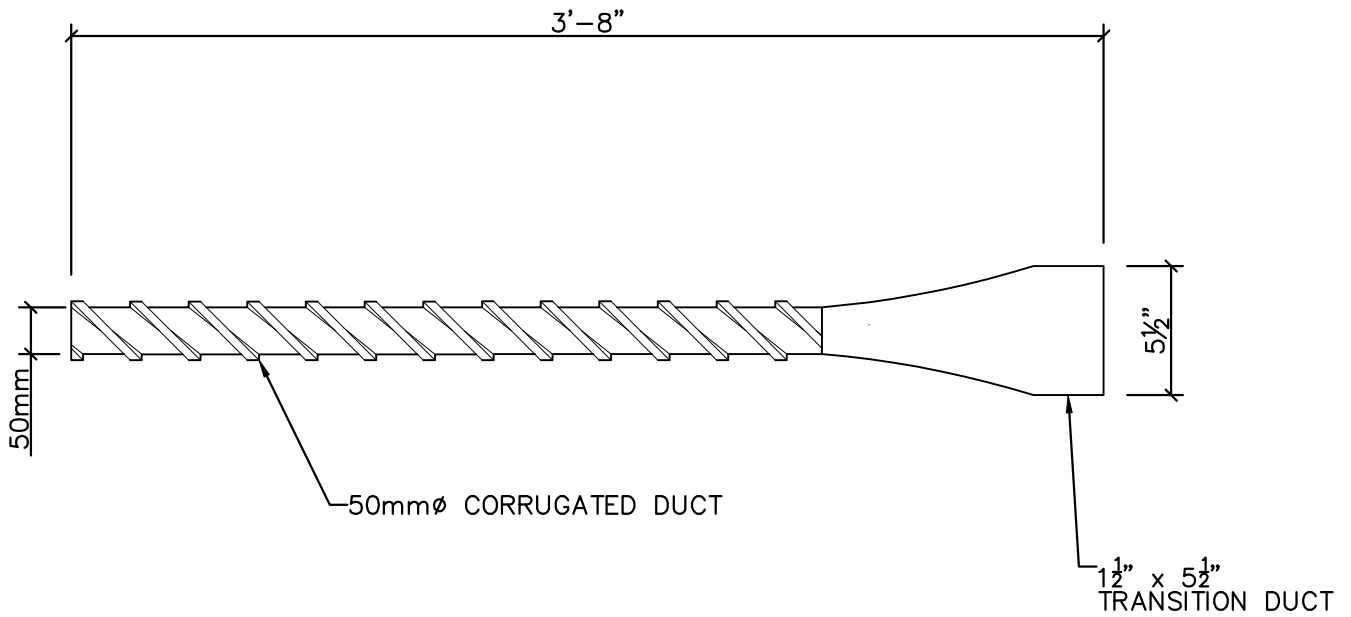


JOB USE

DATE: 11/17/08
 CONSULTING ENGINEERS GROUP, INC.

				FINISH NOTES: MATERIAL AND WELDING NOTES: SEE HIGH CONCRETE GROUP'S STANDARDS PACKAGE FOR ASTM AND AWS REQUIREMENTS.	DRAFTER: BDL	 HIGH CONCRETE GROUP	WEIGHT:	
					CHECKER: WK		PROJECT:	NOTRE DAME
NO.	REVISION	BY	DATE	ENGINEER:	JOB NO.:		08-	SHEET NO.:


PLOTDATE: 10/05/07 07:39:40 KGAERDITZ FILENAME: O:\JOBS\07027 (NEW MEADOWLANDS STADIUM)\ACAD\PARTS\PRECAST\07348-P5008HG



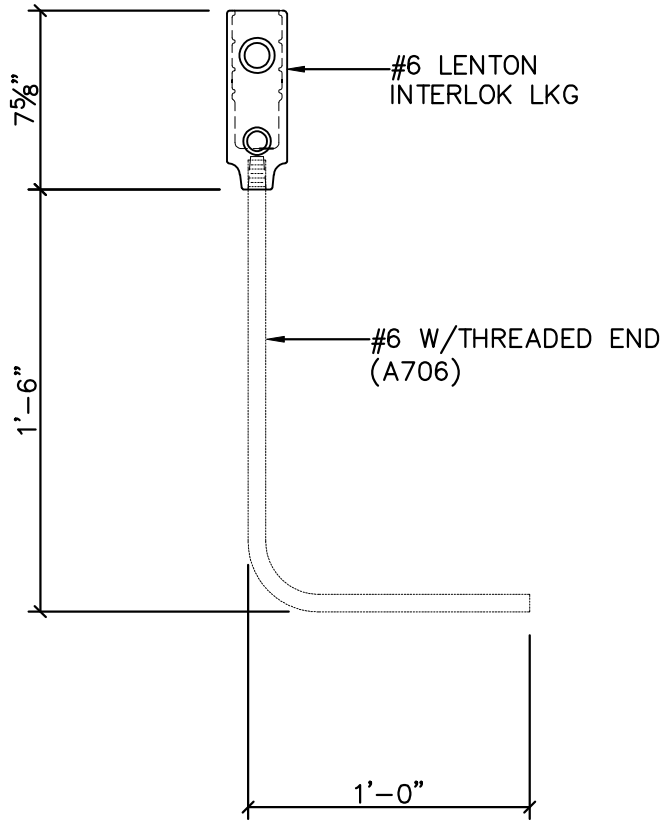
JOB USE

DATE: 11/17/08

CONSULTING ENGINEERS GROUP, INC.


				<u>FINISH NOTES:</u>			WEIGHT:
				<u>MATERIAL AND WELDING NOTES:</u> SEE HIGH CONCRETE GROUP'S STANDARDS PACKAGE FOR ASTM AND AWS REQUIREMENTS.	DRAFTER: BDL	 HIGH CONCRETE GROUP	PROJECT: NOTRE DAME
					CHECKER: WK		JOB NO.: 08-
NO.	REVISION	BY	DATE	ENGINEER:	SHEET NO.: 5003UC		

PLOTDATE: 10/05/07 07:39:40 KGAERDITZ FILENAME: O:\JOBS\07027 (NEW MEADOWLANDS STADIUM)\ACAD\PARTS\PRECAST\07348-P5008HG

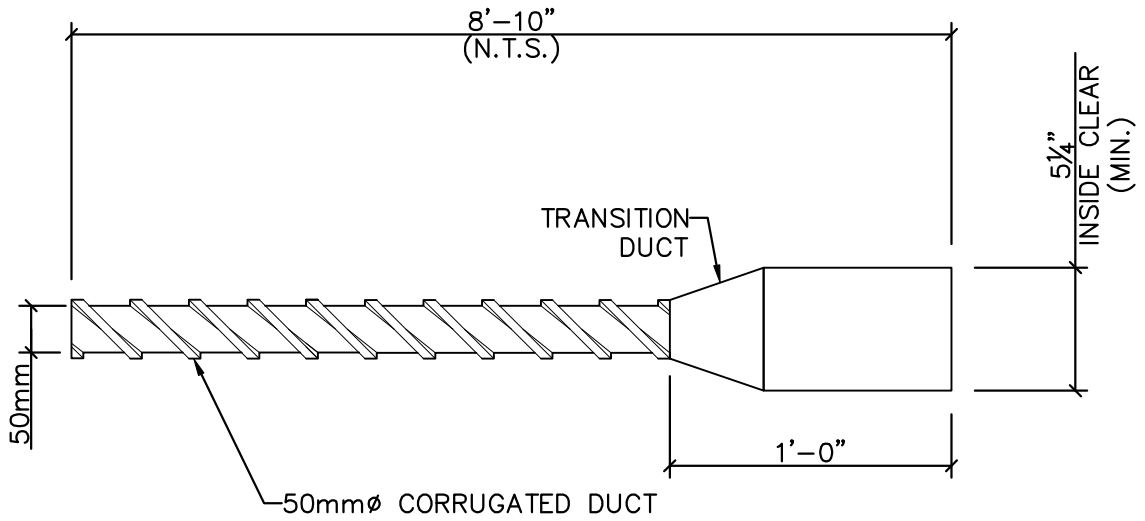


JOB USE

DATE: 11/17/08
 CONSULTING ENGINEERS GROUP, INC.


				FINISH NOTES: MATERIAL AND WELDING NOTES: SEE HIGH CONCRETE GROUP'S STANDARDS PACKAGE FOR ASTM AND AWS REQUIREMENTS.	DRAFTER: BDL	 HIGH CONCRETE GROUP	WEIGHT:	
					CHECKER: WK		PROJECT:	NOTRE DAME
NO.	REVISION	BY	DATE	ENGINEER:	JOB NO.:		08-	SHEET NO.:

PLOTDATE: 10/05/07 07:39:40 KGAERDITZ FILENAME: O:\JOBS\07027 (NEW MEADOWLANDS STADIUM)\ACAD\PARTS\PRECAST\07348-P5008HG

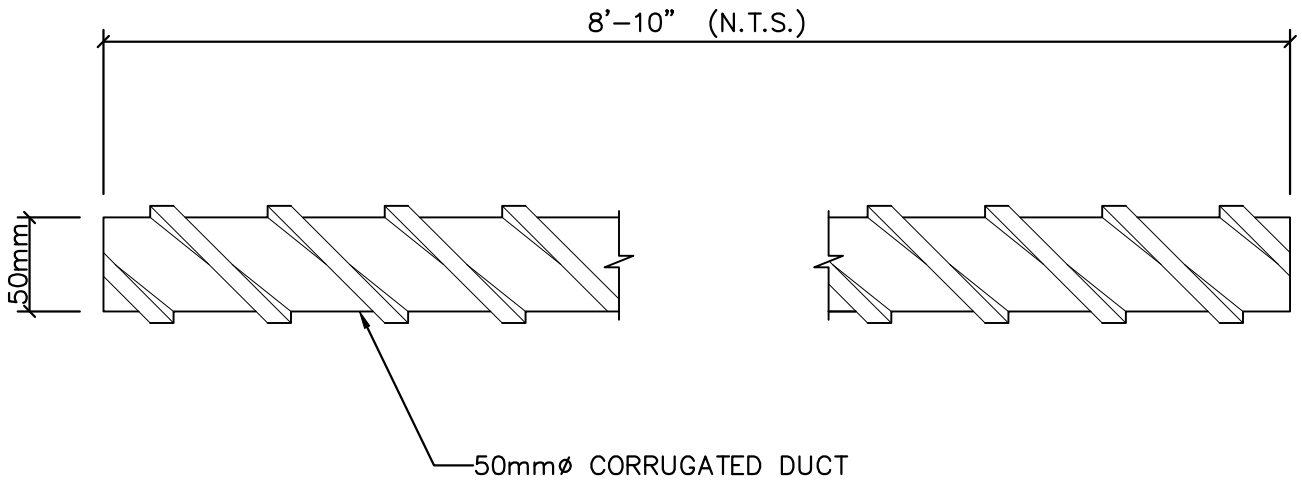


JOB USE

DATE: 11/17/08
CONSULTING ENGINEERS GROUP, INC.


				<u>FINISH NOTES:</u>	DRAFTER: BDL		WEIGHT:
				<u>MATERIAL AND WELDING NOTES:</u> SEE HIGH CONCRETE GROUP'S STANDARDS PACKAGE FOR ASTM AND AWS REQUIREMENTS.	CHECKER: WK	 HIGH CONCRETE GROUP	PROJECT: NOTRE DAME
					ENGINEER:		JOB NO.: 08-
NO.	REVISION	BY	DATE				SHEET NO.: 5005UC

PLOTDATE: 10/05/07 07:39:40 KGAERDITZ FILENAME: O:\JOBS\07027 (NEW MEADOWLANDS STADIUM)\ACAD\PARTS\PRECAST\07348-P5008HG

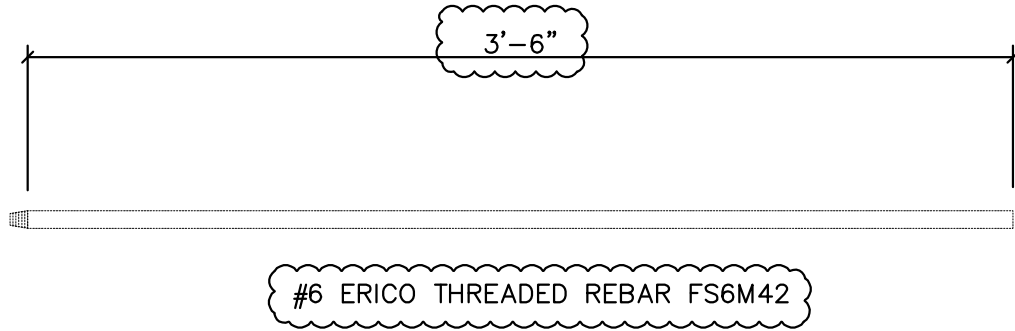


JOB USE

DATE: 11/17/08
CONSULTING ENGINEERS GROUP, INC.

				<u>FINISH NOTES:</u>	DRAFTER: BDL		WEIGHT:
				<u>MATERIAL AND WELDING NOTES:</u> SEE HIGH CONCRETE GROUP'S STANDARDS PACKAGE FOR ASTM AND AWS REQUIREMENTS.	CHECKER: WK	 HIGH CONCRETE GROUP	PROJECT: NOTRE DAME
					ENGINEER:		JOB NO.: 08-
NO.	REVISION	BY	DATE		SHEET NO.: 5006UC		

PLOTDATE: 10/05/07 07:39:40 KGAERDITZ FILENAME: O:\JOBS\07027 (NEW MEADOWLANDS STADIUM)\ACAD\PARTS\PRECAST\07348-P5008HG




REVISED

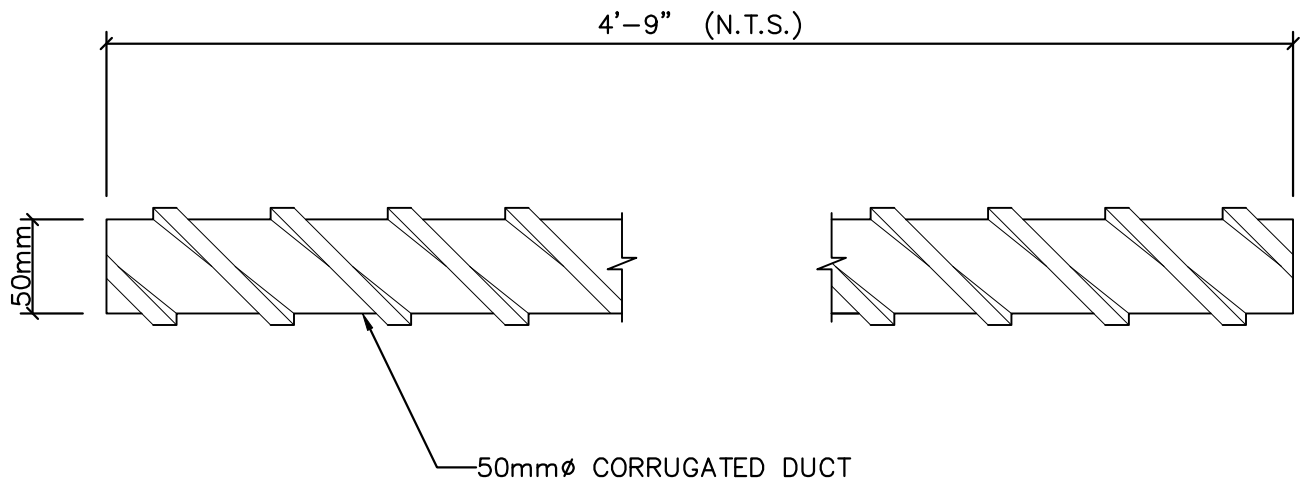
DATE: 12-02-2008
CONSULTING ENGINEERS GROUP, INC.

JOB USE

DATE: 11/17/08
CONSULTING ENGINEERS GROUP, INC.


				FINISH NOTES:	DRAFTER: BDL	 HIGH CONCRETE GROUP	WEIGHT:	
				MATERIAL AND WELDING NOTES: SEE HIGH CONCRETE GROUP'S STANDARDS PACKAGE FOR ASTM AND AWS REQUIREMENTS.	CHECKER: WK		PROJECT:	NOTRE DAME
1	AS CLOUDED	BDL	12-02-08		ENGINEER:		JOB NO.:	08-
NO.	REVISION	BY	DATE			SHEET NO.:	5007UC	

PLOTDATE: 10/05/07 07:39:40 KGAERDITZ FILENAME: O:\JOBS\07027 (NEW MEADOWLANDS STADIUM)\ACAD\PARTS\PRECAST\07348-P5008HG

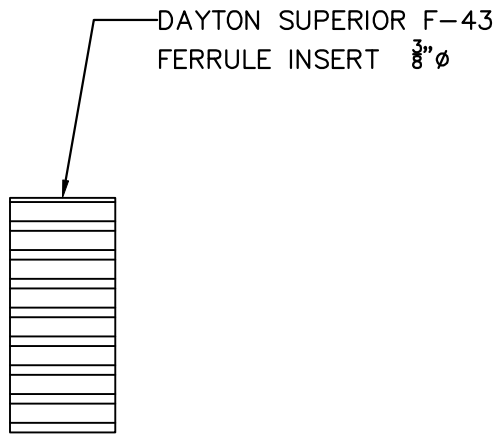


JOB USE

DATE: 11/17/08
 CONSULTING ENGINEERS GROUP, INC.

				<u>FINISH NOTES:</u>				
				<u>MATERIAL AND WELDING NOTES:</u> SEE HIGH CONCRETE GROUP'S STANDARDS PACKAGE FOR ASTM AND AWS REQUIREMENTS.	<u>DRAFTER:</u> BDL	 HIGH CONCRETE GROUP	WEIGHT:	
					<u>CHECKER:</u> WK		PROJECT:	NOTRE DAME
NO.	REVISION	BY	DATE	<u>ENGINEER:</u>	JOB NO.:		08-	SHEET NO.:


PLOTDATE: 10/05/07 07:39:40 KGAERDITZ FILENAME: O:\JOBS\07027 (NEW MEADOWLANDS STADIUM)\ACAD\PARTS\PRECAST\07348-P5008HG



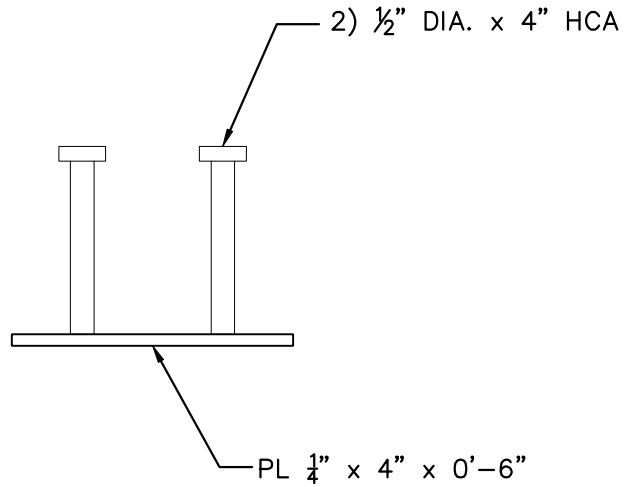
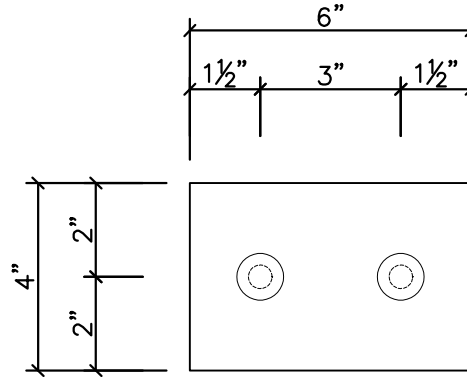
JOB USE

DATE: 11/17/08

CONSULTING ENGINEERS GROUP, INC.


				FINISH NOTES: MATERIAL AND WELDING NOTES: SEE HIGH CONCRETE GROUP'S STANDARDS PACKAGE FOR ASTM AND AWS REQUIREMENTS.	DRAFTER: BDL	 HIGH CONCRETE GROUP	WEIGHT:	
					CHECKER: WK		PROJECT:	NOTRE DAME
NO.	REVISION	BY	DATE	ENGINEER:	JOB NO.:		08-	SHEET NO.:

PLOTDATE: 10/05/07 07:39:40 KGAERDITZ FILENAME: O:\JOBS\07027 (NEW MEADOWLANDS STADIUM)\ACAD\PARTS\PRECAST\07348-P5008HG

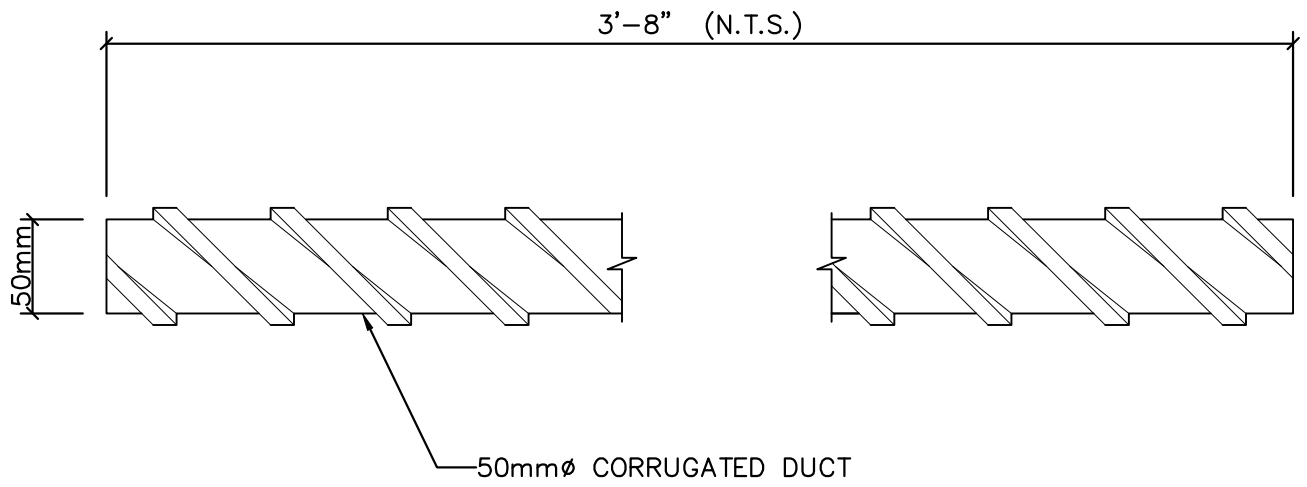


JOB USE

DATE: 11/17/08
 CONSULTING ENGINEERS GROUP, INC.


				FINISH NOTES: MATERIAL AND WELDING NOTES: SEE HIGH CONCRETE GROUP'S STANDARDS PACKAGE FOR ASTM AND AWS REQUIREMENTS.	DRAFTER: BDL	 HIGH CONCRETE GROUP	WEIGHT:	
					CHECKER: WK		PROJECT:	NOTRE DAME
NO.	REVISION	BY	DATE	ENGINEER:	JOB NO.:		08-	SHEET NO.:

PLOTDATE: 10/05/07 07:39:40 KGAERDITZ FILENAME: O:\JOBS\07027 (NEW MEADOWLANDS STADIUM)\ACAD\PARTS\PRECAST\07348-P5008HG



JOB USE

DATE: 11/17/08
 CONSULTING ENGINEERS GROUP, INC.

				FINISH NOTES: MATERIAL AND WELDING NOTES: SEE HIGH CONCRETE GROUP'S STANDARDS PACKAGE FOR ASTM AND AWS REQUIREMENTS.	DRAFTER: BDL	 HIGH CONCRETE GROUP	WEIGHT:	
					CHECKER: WK		PROJECT:	NOTRE DAME
NO.	REVISION	BY	DATE	ENGINEER:	JOB NO.:		08-	SHEET NO.: